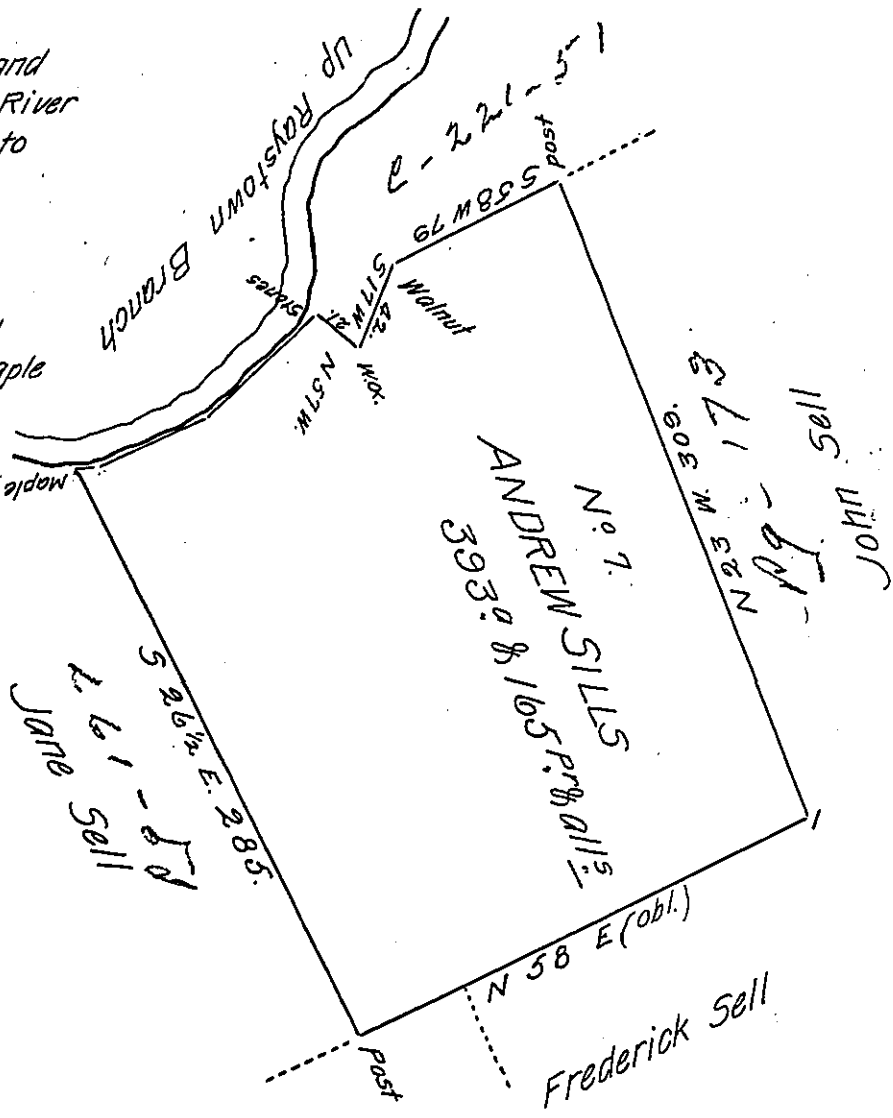


the Courses and Distances up River from Stones to Maple.

5 42 W 64
5 60 W 53
5 82 W 8

125 in all to Maple



Situate in Hopewell Township Huntingdon County Containing Three Hundred and Ninety Three Acres and One Hundred and Sixty five Perches and the Usual Allowance for Roads. Surveyed the Sixth Day of May 1794. In Pursuance of a Warrant in the Name of Andrew Sills Dated the Eighteenth Day of March 1794.

(obliterated)

To Daniel Brodhead Esqr S. G.

IN TESTIMONY that the above is a copy of the original remaining on file in the Department of Internal Affairs of Pennsylvania, made conformably to an Act of Assembly approved the 16th day of February, 1833, I have hereunto set my Hand and caused the Seal of said Department to be affixed at Harrisburg, this fifth day of December 1906.

Isaac A. Brown
Secretary of Internal Affairs.